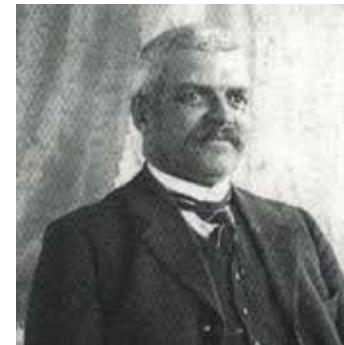




Mathey - Tissot

2019

SOMMARY



HISTORY

6



ERIC GIROUD AUTO

10



ERIC GIROUD QUARTZ

12



TYPE 21 FLYBACK

14



TYPE 21 CHRONO
AUTO - 16



TYPE 21 AUTO
17



TYPE 22
18



EDMOND 1886
CALIBRE 98 - 20



EDMOND AUTOMATIC
22



EDMOND MOON
24



EDMOND LEATHER
26



EDMOND METAL
28



RETROGRADE
32



SKELETON
34



RENAISSANCE
36



EVASION
42



ROLLY VINTAGE AUTO
40MM - 44



ROLLY VINTAGE
QUARTZ 40MM - 44



ROLLY VINTAGE AUTO
42MM - 46



ROLLY VINTAGE
QUARTZ 42MM - 49



ARTEMIS
90



FIORE
94



LUCREZIA
98



LUTENZIA
100



ELISIR MOON
52



ELISIR
54



SMART CHRONO
58



SMART
60



ALLURE
102



CITY AUTOMATIC BIG
104



CITY
108



ROLLY I
114



DARIUS
64



URBAN
68



VINTAGE
70



ELEGANCE CHRONO
72



ROLLY II
116



ROLLY III
118



ELEGANCE
76



MANDY
80



MILLY
84



ELISA & MAX
86

HISTORY

1858

Birth of Edmond Mathey-Tissot at Ponts de Martel, Canton of Neuchâtel, in Switzerland.

1886

Comptoir d'Horlogerie Mathey-Tissot, exclusive manufacture of quality complicated movements and complete watches : Chronograph counters, catch-up, perpetual calendar.



High quality movements manufacturer

Mathey-Tissot, was quickly recognized as a manufacturer of high quality movements on the basis of renowned sketches such as the ones for chronograph movements of Le Coultre manufacturer.

Some prestigious customers of Mathey-Tissot:

Zenith - Vacheron & Constantin - IWC - Movado - Ulysse Nardin - Girard Perregaux - Concord - Le Coultre - Longines - Heuer - Breguet - Piaget - Tissot - Alpina - Jaeger - Bulova - Moser - Louis Audemars & Cie, Orion, Cartier



Mathey-Tissot between 1893 et 1912

- 15 August 1893 - Quartz repeat watch, improved
- 30 September 1901 - Mechanism of repetition minutes
- 31 May 1903 - Speed regulator for small wheels of repeating watches
- 30 November 1904 - Repeating clock, draft Le Coultre
- 31 December 1906 - Repeating clock
- 18 August 1908 - Alarm and ring mechanism with an 8-days power reserve
- 01 March 1909 - Case ring for repeating timepieces
- 16 October 1912 - Chronograph hours counter



1914

Grand Prize of the National Exhibition of Bern awarded to Mathey-Tissot for his complicated watch movements.
First Class Grand Prize at the Geneva Observatory for 6 Chronographs with adjustable counters.

1929

The company Mathey-Tissot is taken over by both sons of the founder Jean & Etienne, graduated from the Watchmaking Schools of Le Sentier and Le Locle.



1961

Mr. Jean Edmond Mathey-Tissot leaves the presidency of the company.



1960 - 1980

Given Mathey-Tissot worldwide reputation due to its high quality watches, the factory became supplier of complete watches (movement, case, watch strap) for prestigious brands such as Le Coultre, Girard Perregaux, Breguet Paris. The factory became also the supplier of watches bracelets and pockets for aviation with type 11 and 12 created from Valjoux sketches for Breguet & Sinn' brands.



1971 - 1981

1975 - Mr. Etienne Mathey-Tissot leaves his place

Mr. Jules Elefant, a historic distributor for the United States, moved to the Ponts de Martel with his wife and three children to take over the company. Meantime, his brother, who remained in New York, takes care of the brand development.

Jules Elefant has collaborated with Etienne Tissot until 1975.

1981 - After Jules Elefant death, his wife and his sons take over the company.

1980

Mathey-Tissot and the house of high quality watchmaking, Bueche-Girod, work together to manufacture high quality complete watches.

Mathey-Tissot becomes one of the most important suppliers of Cartier USA.

1985 - 1993

Elefant family takes over the brand.

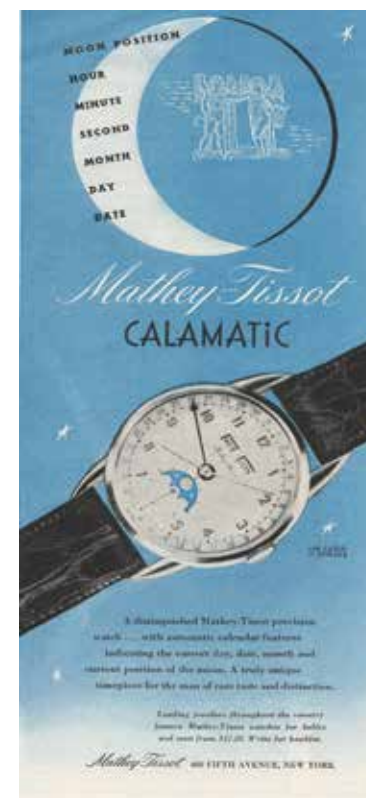
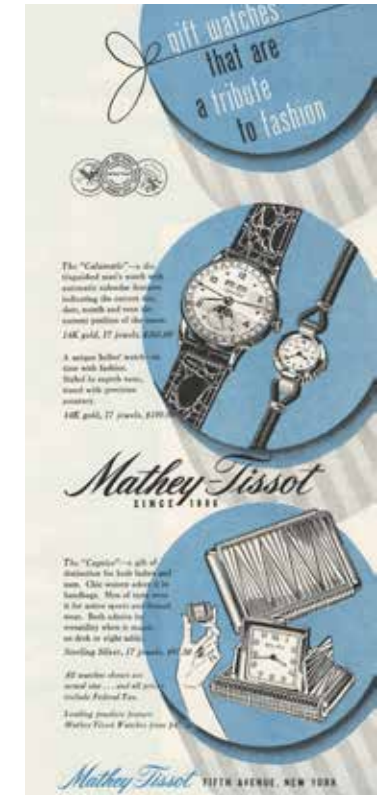
The Company is located at Mont Blanc street, n°4, at Geneva

1994 - 2011

Brand management by Mr Alberto Frigerio Bonvicino

2012

Complete reorganization of the collections. Brand opening to international markets and implementation of a structure to maximize quality control.



2013

Exhibition at Baselworld

2014

Mathey-Tissot brand is acquired by Mr Alberto Frigerio Bonvicino.

2017

SWP Swiss Watch Partners SA, exclusive licence of Mathey-Tissot

Eric Giroud Automatic *Novelty*

Movement: Swiss Made Automatic Sellita SW200-1
Power Reserve : 36 hours, 28800 beats/ hour, 36 rubis
Case: Stainless Steel 316L Sand Blasted
Caseback : Transparent Sapphire Glass
Glass: Sapphire Scratch Resistant
Water Resistant: 5 ATM
Straps: Genuine Leather
Diameter: 42 mm
Case Thickness: 11.8 mm



EG1886ATM



EG1886ATN



EG1886ATR



EG1886ATBU



EG1886ATV

Eric Giroud Quartz
Novelty

Movement: Swiss Made Quartz Ronda 715LI - 10 years long life battery
Case: Stainless Steel 316L Shiny
Glass: Sapphire Scratch Resistant
Water Resistant: 5 ATM
Straps: Genuine Leather
Diameter: 42 mm
Case Thickness: 11.8 mm



EG1886AM



EG1886AN



EG1886AR



EG1886ABU



EG1886AV

The Original Type XX



Flyback Type 21

Movement: Swiss Made Chrono ETA G10 212 AN
Functions: Flyback, 60 seconds chronograph counter with central hand, 60 minutes, 12 hours
Case: Stainless Steel 316L
Glass: Antireflex Sapphire
Backplate: Screwed and Engraved
Water Resistant: 5 ATM
Straps: Genuine Leather or Stainless Steel 316L
Diameter: 42 mm
Case Thickness: 11 mm



H1821CHALNO



H1821CHALNG



H1821CHANO



H1821CHANG

Type 21 Chrono Automatic

Movement: Swiss Made Chrono Automatic 7750 Valjoux
Functions: Chronograph, Day, Date, Hour, Minute, Second
Case: Stainless Steel 316L
Glass: Antireflex Sapphire
Backplate: Screwed, Sapphire Glass
Water Resistant: 5 ATM
Straps: Genuine Leather or Stainless Steel 316L
Diameter: 42 mm
Case Thickness: 11 mm



H1821CHATLNO



H1821CHATLNG



H1821ATLNO



H1821ATLNG



H1821CHATNO



H1821CHATNG



H1821ATANO



H1821ATANG

Type 21 Automatic

Movement: Swiss Made Automatic STP 1-11
Power Reserve : 44 hours, 28800 beats/hour, 26 rubis, 4HZ
Case : Stainless Steel 316L
Glass : Antireflex Sapphire
Backplate : Screwed, Sapphire Glass
Water Resistant : 5 ATM
Straps: Genuine Leather or Stainless Steel 316L
Diameter: 42 mm
Case Thickness: 11 mm

Type 22
Novelty

Movement: Swiss Made Chrono Ronda Z60
Functions : 60 seconds, 30 Minutes and day of the week
Case: Stainless Steel 316L
Glass: Sapphire
Water Resistant: 5ATM
Straps: Stainless Steel 316L Plain or Bicolor Golden PVD
Diameter: 42 mm
Case Thickness: 11 mm



H1822CHABU



H1822CHAS



H1822CHAN



H1822CHAR



H1822CHBN



H1822CHBBU

Edmond 1886 Calibre 98

Movement: Calibre 98 Mechanical Hand Winding Swiss Made 16 lines, full skeleton hand made

Power Reserve : 46 hours

Case: Stainless Steel 316L Plain or Rose tone PVD

Glass: Curve Front Antireflex Sapphire

Backplate : Sapphire Glass

Water Resistant : 5 ATM

Straps: Genuine Leather hand stitch with luxury buckle

Diameter: 42 mm

Case Thickness : 12 mm



AM1886PZ
Limited Edition 200



AM1886ABU
Limited Edition 090

Edmond Automatic

Movement: Swiss Made Automatic MS11/101 Open Heart
Power Reserve : 42 hours
Case: Stainless Steel 316L Plain or Rose tone PVD or Golden PVD
Glass: Sapphire
Backplate : Sapphire Glass
Water Resistant: 5 ATM
Straps: Genuine Leather
Diameter: 42 mm
Case Thickness: 11 mm



AMH1886AS
Limited Edition 075



AMH1886PSN
Limited Edition 150



H1886PS



H1886PI



H1886AS

Edmond Moon

Novelty

Movement: Swiss Made Quartz Ronda 706.3
Functions : Moonphase, Day, Month and Date
Case: Stainless Steel 316L Plain or Rose tone PVD
Glass: Sapphire
Water Resistant: 5 ATM
Straps: Genuine Leather
Diameter: 42 mm
Case Thickness: 11 mm



H1886RAI



H1886RAN



H1886RPI



H1886RPN



H1886RPBU

Edmond Leather

Movement: Swiss Made Quartz Ronda 6004B
Case: Stainless Steel 316L Plain or Rose tone PVD or Golden PVD
Glass: Sapphire
Water Resistant: 5 ATM
Straps: Genuine Leather
Diameter: 42 mm
Case Thickness: 5 mm



H1886QPBU



H1886QAI



H1886QAS



H1886QABU



H1886QPI



H1886QPS



H1886QPM



Men

Movement : Swiss Made Quartz Ronda 6004B
 Diameter: 42 mm
 Case Thickness: 7 mm
 Case: Stainless Steel 316L
 Glass: Sapphire
 Water Resistant: 5 ATM
 Straps: Stainless Steel 316L
 Dials: Analogic and Roman

Women

Movement : Swiss Made Quartz Ronda 1064
 Diameter: 32 mm
 Case Thickness: 5 mm
 Case: Stainless Steel 316L
 Glass: Sapphire
 Water Resistant: 5 ATM
 Straps: Stainless Steel 316L
 Dials : Cubic Zirconia



H1886MABU



H1886MAI



H1886MAN



D1886MABU



D1886MAI



D1886MAN

Men

Movement : Swiss Made Quartz Ronda 6004B
Diameter: 42 mm
Case Thickness: 7 mm
Case: Stainless Steel 316L Golden PVD
Glass: Sapphire
Water Resistant: 5 ATM
Straps: Stainless Steel 316L Golden PVD or Bicolor Golden PVD
Dials: Analogic and Roman

Women

Movement : Swiss Made Quartz Ronda 1064
Diameter: 32 mm
Case Thickness: 5 mm
Case: Stainless Steel 316L Golden PVD
Glass: Sapphire
Water Resistant: 5 ATM
Straps: Stainless Steel 316L Golden PVD or Bicolor Golden PVD
Dials : Cubic Zirconia

Men

Movement : Swiss Made Quartz Ronda 6004B
Diameter: 42 mm
Case Thickness: 7 mm
Case: Stainless Steel 316L PVD IPR
Glass: Sapphire
Water Resistant: 5 ATM
Straps: Stainless Steel 316L Rose tone PVD or Bicolor Rose tone PVD
Dials: Analogic and Roman

Women

Movement : Swiss Made Quartz Ronda 1064
Diameter: 32 mm
Case Thickness: 5 mm
Case: Stainless Steel 316L PDV IPR
Glass: Sapphire
Water Resistant: 5 ATM
Straps: Stainless Steel 316L Rose tone PVD or Bicolor Rose tone PVD
Dials : Cubic Zirconia



H1886MPI



H1886MBI



H1886MBN



H1886MRI



H1886MRM



H1886MRN



D1886MPI



D1886MBI



D1886MBN



D1886MRI



D1886MRM



D1886MRN

Retrograde
Novelty

Movement: Swiss Made Quartz Ronda 7004P
Case: Stainless Steel 316L Plain or Rose tone PVD
Glass: Sapphire
Water Resistant: 5 ATM
Straps: Genuine Leather
Diameter: 42 mm
Case Thickness: 9 mm



H7021AI



H7021AM



H7021AN



H7021PI



H7021PM



H7021PN

Skeleton
Novelty

Movement: Swiss Made Automatic STP 5-15
Power Reserve : 44 hours, 26 Rubis, 28800 beats/hour, 4HZ
Case: Stainless Steel 316L Plain or Rose tone PVD
Glass: Sapphire
Water Resistant: 5 ATM
Straps: Genuine Leather
Diameter: 43 mm
Case Thickness: 13 mm



H7051ABU



H7051AI



H7051AN



H7051PM



H7051PI



H7051PN

Renaissance

Movement: Swiss Made Automatic STP 1-11
Power Reserve: 44 hours, 28800 beats/hour, 26 Rubis, 4HZ
Case: Stainless Steel 316L Plain or Rose tone PVD
Glass: Sapphire
Backplate: Sapphire Glass
Water Resistant: 5 ATM
Straps: Genuine Leather
Diameter: 43 mm
Case Thickness: 10 mm



H9030PN



H9030AI



H9030ABU



H9030AN



H9030PI



H9030PBU



H9030PM

Evasion Novelty

Men

Movement : Swiss Made Quartz Ronda 505 h6
Diameter: 42 mm
Case Thickness: 8 mm
Case: Stainless Steel 316L
Glass: Sapphire
Water Resistant: 5 ATM
Straps: Stainless Steel 316L

Women

Movement : Swiss Made Quartz Ronda 585 h6
Diameter: 32 mm
Case Thickness: 8 mm
Case: Stainless Steel 316L
Glass: Sapphire
Water Resistant: 5 ATM
Straps: Stainless Steel 316L



H152AI



H152ABU



H152AN



D152AI



D152ABU



D152AN

Men

Movement : Swiss Made Quartz Ronda 505 h6
Diameter: 42 mm
Case Thickness: 8 mm
Case: Stainless Steel 316L Bicolor Golden PVD or Golden PVD
Glass: Sapphire
Water Resistant: 5 ATM
Straps: Stainless Steel 316L Bicolor Golden PVD or Golden PVD

Women

Movement : Swiss Made Quartz Ronda 585 h6
Diameter: 32 mm
Case Thickness: 8 mm
Case: Stainless Steel 316L Bicolor Golden PVD or Golden PVD
Glass: Sapphire
Water Resistant: 5 ATM
Straps: Stainless Steel 316L Bicolor Golden PVD or Golden PVD

Men

Movement : Swiss Made Quartz Ronda 505 h6
Diameter: 42 mm
Case Thickness: 8 mm
Case: Stainless Steel 316L Bicolor Rose tone PVD
Glass: Sapphire
Water Resistant: 5 ATM
Straps: Stainless Steel 316L Bicolor Rose tone PVD

Women

Movement : Swiss Made Quartz Ronda 585 h6
Diameter: 32 mm
Case Thickness: 8 mm
Case: Stainless Steel 316L Bicolor Rose tone PVD
Glass: Sapphire
Water Resistant: 5 ATM
Straps: Stainless Steel 316L Bicolor Rose tone PVD



H152BI



H152BN



H152PDI



H152RA



H152RN



D152BI



D152BN



D152PDI



D152RA



D152RN

Rolly Vintage Automatic 40 mm

Movement: Swiss Made Automatic STP 1-11
Power Reserve: 44 hours, 28800 beats/hour, 26 Rubis, 4HZ
Case: Stainless Steel 316L
Glass: Sapphire
Backplate: Hardened Mineral Glass
Water Resistant: 10 ATM
Crown: Screwed and Protected - Bezel: Unidirectional GMT (decorative)
Diameter: 40 mm - Case Thickness: 12 mm
Straps: Stainless Steel 316L with deployment buckle and engraved MT logo or Vintage Genuine leather



H900ATLBU



H900ATLN



H900ATLR



H900ATLV



H900ATBU



H900ATN



H900ATR



H900ATV

Rolly Vintage Quartz 40mm

Movement: Swiss Made Quartz Ronda 505 h3
Case: Stainless Steel 316L
Glass: Sapphire
Water Resistant: 10 ATM
Bezel: Unidirectional GMT (decorative)
Straps: Stainless Steel 316L
Diameter: 40 mm
Case Thickness: 10 mm



H900ABU



H900AR



H900ALBU



H900ALR



H900PLN



H900AN



H900AV



H900ALN



H900ALV

Rolly Vintage Quartz 40mm

Movement: Swiss Made Quartz Ronda 505 h3
Case: Stainless Steel 316L Plain or Golden PVD
Glass: Sapphire
Water Resistant: 10 ATM
Bezel: Unidirectional GMT (decorative)
Straps: Vintage Genuine Leather
Diameter: 40 mm
Case Thickness: 10 mm

Rolly Vintage Automatic 42 mm

Movement: Swiss Made Automatic STP 1-11
Power Reserve: 44 hours, 28800 beats/hour, 26 Rubis, 4HZ
Case: Stainless Steel 316L Plain or Bicolor Golden PVD
Glass: Sapphire
Backplated: Hardened Mineral Glass
Water Resistant: 10 ATM
Crown: Screwed and Protected - **Bezel:** Unidirectional Submariner
Diameter: 42 mm - **Case Thickness:** 12 mm
Straps: Stainless Steel 316L Plain or Bicolor Golden PVD with deployment buckle and engraved MT logo



H901ATBU



H901ATR



H901ATN



H901ATV



H901ATBBU



H901ATBN

Rolly Vintage Automatic 42 mm

Movement: Swiss Made Automatic STP 1-11
Power Reserve: 44 hours, 28800 beats/hour, 26 Rubis, 4HZ
Case: Stainless Steel 316L
Glass: Sapphire
Backplated: Hardened Mineral Glass
Water Resistant: 10 ATM
Crown: Screwed and Protected - **Bezel:** Unidirectional Submariner
Diameter: 42 mm - **Case Thickness:** 12 mm
Straps: Vintage Genuine leather



H901ATLBU



H901ATLR



H901ABU



H901AR



H901ATLN



H901ATLV



H901AN



H901AV

Rolly Vintage Quartz 42mm

Movement: Swiss Made Quartz Ronda 505 h3
Case: Stainless Steel 316L
Glass: Sapphire
Water Resistant: 10 ATM
Bezel: Unidirectional Submariner
Straps: Stainless Steel 316L
Diameter: 42 mm
Case Thickness: 12 mm

Rolly Vintage Quartz 42 mm

Movement: Swiss Made Quartz Ronda 505 h3
Case: Stainless Steel 316L
Glass: Sapphire
Water Resistant: 10 ATM
Bezel: Unidirectional Submariner
Straps: Vintage Genuine Leather
Diameter: 42 mm
Case Thickness: 12 mm



H901ALBU



H901ALR



H901BBU



H901BN



H901ALN



H901ALV



H901PLN

Rolly Vintage Quartz 42 mm

Movement: Swiss Made Quartz Ronda 505 h3
Case: Stainless Steel 316L Bicolor Golden PVD or Golden PVD
Glass: Sapphire
Water Resistant: 10 ATM
Bezel: Unidirectional Submariner
Straps: Stainless Steel 316L Bicolor Golden PVD or Vintage Genuine Leather
Diameter: 42 mm
Case Thickness: 12 mm

Rolly Vintage GMT Novelty

Movement: Swiss Made Quartz Ronda 515H24
Case: Stainless Steel 316L
Glass: Sapphire
Water Resistant: 5 ATM
Bezel: GMT
Straps: Stainless Steel 316L
Diameter: 42 mm
Case Thickness: 9 mm



H902ABU



H902AR



H902AV



H902AN



H902AG

Elisir Moon

Movement: Swiss Made Chrono Quartz ETA G10.962 EO

Function: Chronograph, Moon Phase, Date

Case: Stainless Steel 316L Plain or Bicolor Golden PVD

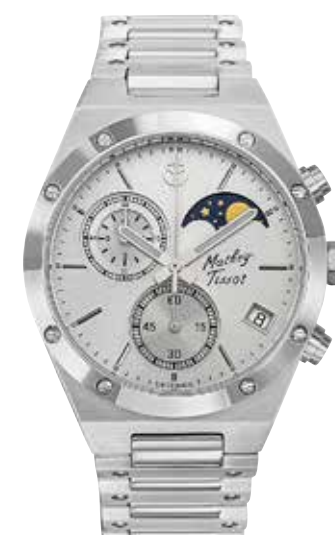
Glass: Sapphire

Water Resistant: 5 ATM

Straps: Stainless Steel 316L Plain or Bicolor Golden PVD

Diameter: 42 mm

Case Thickness: 12 mm



H680CHAS



H680CHAN



H680CHABU
Limited Edition 499



H680CHBI



H680CHBN



H680CHBBU
Limited Edition 499

Men

Movement : Swiss Made Quartz Ronda 515 h6
Diameter: 41 mm
Case Thickness: 7 mm
Case: Stainless Steel 316L
Glass: Sapphire
Water Resistant: 5 ATM
Straps: Stainless Steel 316L

Women

Movement : Swiss Made Quartz Ronda 505 h6
Diameter: 30 mm
Case Thickness: 5 mm
Case: Stainless Steel 316L
Glass: Sapphire
Water Resistant: 5 ATM
Straps: Stainless Steel 316L



H680SE
Special Edition

D680SE
Special Edition



H680ABU



H680AI



H680AN



H680ABR



D680ABU



D680AI



D680AN



D680ABR

Men

Movement : Swiss Made Quartz Ronda 515 h6
Diameter: 41 mm
Case Thickness: 7 mm
Case: Stainless Steel 316L Bicolor Golden PVD
Glass: Sapphire
Water Resistant: 5 ATM
Straps: Stainless Steel 316L Bicolor Golden PVD

Women

Movement : Swiss Made Quartz Ronda 505 h6
Diameter: 30 mm
Case Thickness: 5 mm
Case: Stainless Steel 316L Bicolor Golden PVD
Glass: Sapphire
Water Resistant: 5 ATM
Straps: Stainless Steel 316L Bicolor Golden PVD

Men

Movement : Swiss Made Quartz Ronda 515 h6
Diameter: 41 mm
Case Thickness: 7 mm
Case: Stainless Steel 316L Golden PVD
Glass: Sapphire
Water Resistant: 5 ATM
Straps: Stainless Steel 316L Golden PVD

Women

Movement : Swiss Made Quartz Ronda 505 h6
Diameter: 30 mm
Case Thickness: 5 mm
Case: Stainless Steel 316L Golden PVD
Glass: Sapphire
Water Resistant: 5 ATM
Straps: Stainless Steel 316L Golden PVD



H680BBR



H680BDI



H680BN



H680PBR



H680PDI



H680PN



D680BBR



D680BDI



D680BN



D680PBR



D680PDI



D680PN

Smart Chrono

Movement: Swiss Made Chrono Quartz Ronda Z60
Functions: Chronograph, Days
Case: Stainless Steel 316L Plain or Rose tone PVD or Golden PVD
Glass: Sapphire
Water Resistant: 5 ATM
Straps: Genuine Leather
Diameter: 42 mm
Case Thickness: 11 mm



H6940CHABU



H6940CHAS



H6940CHPM



H6940CHPN



H6940CHPI



Men

Movement : Swiss Made Quartz Ronda 505 h6
Diameter: 42 mm
Case Thickness: 5 mm
Case: Stainless Steel 316L
Glass: Sapphire
Water Resistant: 5 ATM
Straps: Stainless Steel 316L or Genuine Leather

Women

Movement : Swiss Made Quartz Ronda 505 h3
Diameter: 33 mm
Case Thickness: 5 mm
Case: Stainless Steel 316L
Glass: Sapphire
Water Resistant: 5 ATM
Straps: Stainless Steel 316L or Genuine Leather



Men
Women

H6940AS
D6940AS



H6940AI
D6940AI



H6940ABU
D6940ABU



Men
Women

H6940MAN
D6940MAN



H6940MAI
D6940MAI



H6940MABU
D6940MABU

Men

Movement : Swiss Made Quartz Ronda 505 h6
Diameter: 42 mm
Case Thickness: 5 mm
Case: Stainless Steel 316L Rose tone PVD or Bicolor Golden PVD
Glass: Sapphire
Water Resistant: 5 ATM
Straps: Stainless Steel 316L Bicolor Golden PVD or Genuine Leather

Women

Movement : Swiss Made Quartz Ronda 505 h3
Diameter: 33 mm
Case Thickness: 5 mm
Case: Stainless Steel 316L Rose tone PVD or Bicolor Golden PVD
Glass: Sapphire
Water Resistant: 5 ATM
Straps: Stainless Steel 316L Bicolor Golden PVD or Genuine Leather

Men

Movement : Swiss Made Quartz Ronda 505 h6
Diameter: 42 mm
Case Thickness: 5 mm
Case: Stainless Steel 316L Golden PVD
Glass: Sapphire
Water Resistant: 5 ATM
Straps: Stainless Steel 316L Golden PVD or Genuine Leather

Women

Movement : Swiss Made Quartz Ronda 505 h3
Diameter: 33 mm
Case Thickness: 5 mm
Case: Stainless Steel 316L Golden PVD
Glass: Sapphire
Water Resistant: 5 ATM
Straps: Stainless Steel 316L Golden PVD or Genuine Leather



H6940PM
D6940PM



H6940PN
D6940PN



H6940PI
D6940PI



H6940PDI
D6940PDI

Men
Women

Men
Women



H6940MBI
D6940MBI



H6940MBDI
D6940MBDI



H6940MBN
D6940MBN



Men
Women

H6940MPI
D6940MPI



H6940MPDI
D6940MPDI



H6940MPN
D6940MPN

Darius
Novelty

Movement: Swiss Made Quartz Ronda 762
Case: Stainless Steel 316L Plain or Rose tone PVD
Glass: Sapphire
Water Resistant: 5 ATM
Straps: Genuine Leather
Diameter: 42 mm
Case Thickness: 4 mm
Dial: Special Fan



H7915AVN
Special Edition



H7915PVN
Special Edition

Movement: Swiss Made Quartz Ronda 762
Case: Stainless Steel 316L
Glass: Sapphire
Water Resistant: 5 ATM
Straps: Genuine Leather
Diameter: 42 mm
Case Thickness: 4 mm

Movement: Swiss Made Quartz Ronda 762
Case: Stainless Steel 316L Rose tone PVD or Golden PVD
Glass: Sapphire
Water Resistant: 5 ATM
Straps: Genuine Leather
Diameter: 42 mm
Case Thickness: 4 mm



H7915ABU



H7915AIN



H7915PI



H791PS



H7915AIS



H7915AS



H7915PYI

Men

Movement: Swiss Made Quartz Ronda 515 h6
Case: Stainless Steel 316L
Glass: Sapphire
Water Resistant: 5 ATM
Straps: Genuine Leather
Diameter: 42 mm
Case Thickness: 6 mm
Dial: Arabic and Analogic

Women

Movement: Swiss Made Quartz Ronda 505 h6
Case: Stainless Steel 316L
Glass: Sapphire
Water Resistant: 5 ATM
Straps: Genuine Leather
Diameter: 30 mm
Case Thickness: 5 mm
Dial: Analogic



H411AS
D411AS



H411AN
D411AN



Men
Women

H411AM
D411AM



H411ABU
D411ABU



H411AV
D411AV

**Vintage
Novelty**

Movement: Swiss Made Quartz Chrono Ronda 5021
Case: Stainless Steel 316L Plain or Rose tone PVD
Glass: Sapphire
Water Resistant: 5 ATM
Straps: Genuine Leather
Diameter: 42 mm
Case Thickness: 5 mm



H42CHAN



H42CHABU



H42CHAF



H42CHAR



H42CHRF

Elegance Chrono



Movement: Swiss Made Chrono Quartz Ronda 5030D
Functions : Chronograph, Date
Case: Stainless Steel 316L
Glass: Sapphire
Water Resistant: 5 ATM
Straps: Stainless Steel 316L or Genuine Leather
Diameter: 42 mm
Case Thickness: 10 mm



H410CHALN



H410CHALI



H410CHAN



H410CHAI

Movement: Swiss Made Chrono Quartz Ronda 5030D
Functions :
Case : Stainless Steel 316L Bicolor Golden PVD
Glass : Sapphire
Water Resistant : 5 ATM
Straps : Stainless Steel 316L Bicolor Golden PVD
Diameter : 42 mm
Case Thickness : 10 mm

Movement: Swiss Made Chrono Quartz Ronda 5030D
Functions :
Case : Stainless Steel 316L Golden PVD
Glass : Sapphire
Water Resistant : 5 ATM
Straps : Stainless Steel 316L Golden PVD or Genuine Leather
Diameter : 42 mm
Case Thickness : 10 mm



H410CHBI



H410CHPI



H410CHPN



H410CHBN



H410CHPLI



H410CHPLN



Men

Movement : Swiss Made Quartz Ronda 505 h3
 Diameter: 42 mm
 Case Thickness: 10 mm
 Case: Stainless Steel 316L with/ without zircon
 Glass: Sapphire
 Water Resistant: 5 ATM
 Straps: Stainless Steel 316L or Genuine Leather

Women

Movement : Swiss Made Quartz Ronda 585 h3
 Diameter: 32 mm
 Case Thickness: 8 mm
 Case: Stainless Steel 316L with/ without zircon
 Glass: Sapphire
 Water Resistant: 5 ATM
 Straps: Stainless Steel 316L or Genuine Leather



Men
Women

H410ALI
D410ALI



H410AI
D410AI



H410AQI
D410AQI



Men
Women

H410ALN
D410ALN



H410AN
D410AN



H410AQN
D410AQN

Men

Movement : Swiss Made Quartz Ronda 505 h3
Diameter: 42 mm
Case Thickness: 10 mm
Case: Stainless Steel Bicolor Rose tone PVD with/ without zircon
Glass: Sapphire
Water Resistant: 5 ATM
Straps: Stainless Steel 316L Rose tone PVD

Women

Movement : Swiss Made Quartz Ronda 585 h3
Diameter: 32 mm
Case Thickness: 8 mm
Case: Stainless Steel Bicolor Rose tone PVD with/ without zircon
Glass: Sapphire
Water Resistant: 5 ATM
Straps: Stainless Steel 316L Rose tone PVD

Men

Movement : Swiss Made Quartz Ronda 505 h3
Diameter: 42 mm
Case Thickness: 10 mm
Case: Stainless Steel Rose tone PVD with/ without zircon
Glass: Sapphire
Water Resistant: 5 ATM
Straps: Stainless Steel 316L Rose tone PVD or Genuine Leather

Women

Movement : Swiss Made Quartz Ronda 585 h3
Diameter: 32 mm
Case Thickness: 8 mm
Case: Stainless Steel Rose tone PVD with/ without zircon
Glass: Sapphire
Water Resistant: 5 ATM
Straps: Stainless Steel 316L Rose tone PVD or Genuine Leather



H410BI
D410BI



H410BN
D410BN



Men
Women

H410PLI
D410PLI



H410PLN
D410PLN



H410PLQI
D410PLQI

Men
Women

Men
Women



H410BQI
D410BQI



Men
Women

H410PQI
D410PQI



H410PI
D410PI



H410PN
D410PN

Mandy
Novelty

Movement: Swiss Made Quartz Ronda 762
Case: Stainless Steel 316L
Glass: Sapphire
Water Resistant: 5ATM
Straps: Stainless Steel 316L
Diameter: 32 mm
Case Thickness: 3 mm
Dial: Spangled



D1091AIS



D1091ANS



D1091BIS



D1091BNS

Movement: Swiss Made Quartz Ronda 762
Case: Stainless Steel 316L
Glass: Sapphire
Water Resistant: 5ATM
Straps: Stainless Steel 316L
Diameter: 32 mm
Case Thickness: 3 mm
Dial: Silver Mirror or Mother of Pearl

Movement: Swiss Made Quartz Ronda 762
Case: Stainless Steel 316L
Glass: Sapphire
Water Resistant: 5ATM
Straps: Stainless Steel 316L Bicolor Rose tone PVD or Bicolor Golden PVD
Diameter: 32 mm
Case Thickness: 3 mm
Dial: Silver Mirror or Golden Mirror



D1091AS



D1091BS



D1091BDI



D1091AN



D1091RS

Movement: Swiss Made Quartz Ronda 762
Case: Stainless Steel 316L Plain or Rose tone PVD or Golden PVD
Glass: Sapphire
Water Resistant: 3 ATM
Straps: Stainless Steel 316L Plain or Rose tone PVD or Golden PVD
Diameter: 30 mm
Case Thickness: 5.5 mm
Dial: Mother of Pearl



D403AI



D403PI



D403PYI



D403AN



D403PN



D403PYN



Max
Movement: Swiss Made Quartz Ronda 515 h3
Case: Stainless Steel 316L
Glass: Sapphire
Water Resistant: 5 ATM
Straps: Stainless Steel 316L
Diameter: 42 mm
Case Thickness: 7 mm

Elisa
Movement: Swiss Made Quartz Ronda 505 h6
Case: Stainless Steel 316L
Glass: Sapphire
Water Resistant: 5 ATM
Straps: Stainless Steel 316L
Diameter: 30 mm
Case Thickness: 7 mm



H2111AI



H2111AN



H2111AS



H2111ABU



D2111AI



D2111AN

Max

Movement: Swiss Made Quartz Ronda 515 h6
Case: Stainless Steel 316L Bicolor Rose tone PVD or Bicolor Golden PVD
Glass: Sapphire
Water Resistant: 5 ATM
Straps: Stainless Steel 316L Bicolor Rose tone PVD or Bicolor Golden PVD
Diameter: 42 mm
Case Thickness: 7 mm

Elisa

Movement: Swiss Made Quartz Ronda 505 h3
Case: Stainless Steel 316L Bicolor Rose tone PVD or Bicolor Golden PVD
Glass: Sapphire
Water Resistant: 5 ATM
Straps: Stainless Steel 316L Bicolor Rose tone PVD or Bicolor Golden PVD
Diameter: 30 mm
Case Thickness: 8 mm

Elisa

Movement: Swiss Made Quartz Ronda 505 h3
Case: Stainless Steel 316L Golden PVD
Glass: Sapphire
Water Resistant: 5 ATM
Straps: Stainless Steel Golden PVD
Diameter: 30 mm
Case Thickness: 8 mm



H2111BI



H2111BI2



H2111BN



D2111PI



D2111BI



D2111BI2



D2111PDI

Movement: Swiss Made Quartz Ronda 1062
 Case: Stainless Steel 316L with or without Cubic Zirconia
 Glass: Sapphire
 Water Resistant: 3 ATM
 Straps: Stainless Steel 316L
 Diameter: 32 mm
 Case Thickness: 5 mm
 Dials : Zircon



D1086AI



D1086ABU



D1086AQI



D1086AQB

Movement: Swiss Made Quartz Ronda 1062
Case: Stainless Steel 316L Bicolor Rose tone PVD or Bicolor Golden PVD with or without Cubic Zirconia
Glass: Sapphire
Water Resistant: 3 ATM
Straps: Stainless Steel 316L Bicolor Rose tone PVD or Bicolor Golden PVD
Diameter: 32 mm
Case Thickness: 5 mm
Dials: Zircon

Movement: Swiss Made Quartz Ronda 1062
Case: Stainless Steel 316L Rose tone PVD or Golden PVD with or without Cubic Zirconia
Glass: Sapphire
Water Resistant: 3 ATM
Straps: Stainless Steel 316L Rose tone PVD or Golden PVD
Diameter: 32 mm
Case Thickness: 5 mm
Dials: Zircon



D1086BI



D1086BYI



D1086BDI



D1086PYI



D1086PQYI



D1086PDI



D1086BQI



D1086BQYI



D1086PI

Movement: Swiss Made Quartz Ronda 762
Case: Stainless Steel 316L
Glass: Sapphire
Water Resistant: 5 ATM
Straps: Stainless Steel 316L or Genuine Leather
Diameter: 32 mm
Case Thickness: 8 mm



D1089AN



D1089ALS



D1089ALN



D1089ALR

Movement: Swiss Made Quartz Ronda 762
Case: Stainless Steel 316L Bicolor Rose tone PVD or Rose tone PVD or Golden PVD
Glass: Sapphire
Water Resistant: 5 ATM
Straps: Stainless Steel 316L Bicolor Rose tone PVD or Rose tone PVD or Golden PVD
Diameter: 32 mm
Case Thickness: 8 mm

Movement: Swiss Made Quartz Ronda 762
Case: Stainless Steel 316L Rose tone PVD or Golden PVD
Glass: Sapphire
Water Resistant: 5 ATM
Straps: Genuine Leather
Diameter: 32 mm
Case Thickness: 8 mm



D1089BI



D1089PI



D1089PN



D1089PLI



D1089PLN



D1089BYI



D1089PYI



D1089PLYI



Movement: Swiss Made Quartz Ronda 763
Case: Stainless Steel 316L Bicolor Rose tone PVD or Bicolor Golden PVD or Golden PVD with Zircon
Glass: Sapphire
Water Resistant: 5 ATM
Straps: Stainless Steel 316L Bicolor Rose tone PVD or Bicolor Golden PVD or Golden PVD
Diameter: 35 mm
Case Thickness: 6 mm



D3082RA



D3082RN



D3082RM



D3082BDI



D3082PA



D3082PDI



Movement: Swiss Made Quartz Ronda 1062
Case: Stainless Steel 316L Plain or Bicolor Golden PVD or Golden PVD with Zircon
Glass: Sapphire
Water Resistant: 5 ATM
Straps: Stainless Steel 316L Plain or Golden PVD
Diameter: 33 mm
Case Thickness: 8 mm
Dial : Mother of Pearl



D1084ABU



D1084BDI



D1084PDI



D1084AN



D1084BI



D1084PN

Movement: Swiss Made Quartz Ronda 1062
Case: Stainless Steel 316L Golden PVD
Glass: Sapphire
Water Resistant: 3 ATM
Straps: Stainless Steel 316L Plain or Golden PVD
Diameter: 28 mm
Case Thickness: 5.5 mm



D539BI



D539PI



D539BDI



D539PDI

City Automatic Big Novelty

Movement: Swiss Made Automatic STP 1-11
Power Reserve : 44 hours, 26 Rubis, 28800 beats/hour, 4HZ
Case: Stainless Steel 316L
Glass: Sapphire
Backplate : Hardened Mineral Glass
Water Resistant: 5 ATM
Straps: Genuine Leather
Diameter: 42 mm
Case Thickness: 10 mm



HB611251ATAI



HB611251ATAG



Movement: Swiss Made Automatic STP 1-11
Power Reserve : 44 hours, 26 Rubis, 28800 beats/hour, 4HZ
Case: Stainless Steel 316L
Glass: Sapphire
Backplate : Hardened Mineral Glass
Water Resistant: 5 ATM
Straps: Genuine Leather
Diameter: 42 mm
Case Thickness: 10 mm

Movement: Swiss Made Automatic STP 1-11
Power Reserve : 44 hours, 26 Rubis, 28800 beats/hour, 4HZ
Case: Stainless Steel 316L Rose tone PVD
Glass: Sapphire
Backplate : Hardened Mineral Glass
Water Resistant: 5 ATM
Straps: Genuine Leather
Diameter: 42 mm
Case Thickness: 10 mm



HB611251ATAN



HB611251ATABU



HB611251ATPI



HB611251ATPG



HB611251ATPBR



HB611251ATABR



HB611251ATPN



HB611251ATPBU



HB

Movement : Swiss Made Quartz Ronda 505 h3
Diameter: 42 mm
Case Thickness: 4 mm
Case: Stainless Steel 316L
Glass: Sapphire
Water Resistant: 3 ATM
Straps: Genuine Leather

H

Movement : Swiss Made Quartz Ronda 505 h3
Diameter: 38 mm
Case Thickness: 4 mm
Case: Stainless Steel 316L
Glass: Sapphire
Water Resistant: 3 ATM
Straps: Genuine Leather

D

Movement : Swiss Made Quartz Ronda 775
Diameter: 28 mm
Case Thickness: 3 mm
Case: Stainless Steel 316L
Glass: Sapphire
Water Resistant: 3 ATM
Straps: Genuine Leather



Ø 42 mm
 Ø 38 mm
 Ø 28 mm

HB611251AI
 H611251AI
 D31186AI

HB611251AG
 H611251AG
 D31186AG

HB611251ABR
 H611251ABR
 D31186ABR



Ø 42 mm
 Ø 38 mm
 Ø 28 mm

HB611251AM
 H611251AM
 D31186AM

HB611251AN
 H611251AN
 D31186AN

HB
Movement : Swiss Made Quartz Ronda 505 h3
Diameter: 42 mm
Case Thickness: 4 mm
Case: Stainless Steel 316L Rose tone
PVD
Glass: Sapphire
Water Resistant: 3 ATM
Straps: Genuine Leather

H
Movement : Swiss Made Quartz Ronda 505 h3
Diameter: 38 mm
Case Thickness: 4 mm
Case: Stainless Steel 316L Rose tone
PVD
Glass: Sapphire
Water Resistant: 3 ATM
Straps: Genuine Leather

D
Movement : Swiss Made Quartz Ronda 775
Diameter: 28 mm
Case Thickness: 3 mm
Case: Stainless Steel 316L Rose tone
PVD
Glass: Sapphire
Water Resistant: 3 ATM
Straps: Genuine Leather

HB
Movement : Swiss Made Quartz Ronda 505 h3
Diameter: 42 mm
Case Thickness: 4 mm
Case: Stainless Steel 316L
Glass: Sapphire
Water Resistant: 3 ATM
Straps: Stainless Steel

H
Movement : Swiss Made Quartz Ronda 505 h3
Diameter: 38 mm
Case Thickness: 4 mm
Case: Stainless Steel 316L
Glass: Sapphire
Water Resistant: 3 ATM
Straps: Stainless Steel

D
Movement : Swiss Made Quartz Ronda 775
Diameter: 28 mm
Case Thickness: 3 mm
Case: Stainless Steel 316L
Glass: Sapphire
Water Resistant: 3 ATM
Straps: Stainless Steel



∅ 42 mm HB611251PI
 ∅ 38 mm H611251PI
 ∅ 28 mm D31186PI



HB611251PG
 H611251PG
 D31186PG



HB611251PBR
 H611251PBR
 D31186PBR



∅ 42 mm HB611251MAG
 ∅ 38 mm H611251MAG
 ∅ 28 mm D31186MAG



HB611251MABR
 H611251MABR
 D31186MABR



∅ 42 mm HB611251PM
 ∅ 38 mm H611251PM
 ∅ 28 mm D31186PM



HB611251PN
 H611251PN
 D31186PN



∅ 42 mm HB611251MABU
 ∅ 38 mm H611251MABU
 ∅ 28 mm D31186MABU



HB611251MAN
 H611251MAN
 D31186MAN



HB611251MAM
 H611251MAM
 D31186MAM

HB
Movement : Swiss Made Quartz Ronda 505 h3
Diameter: 42 mm
Case Thickness: 4 mm
Case: Stainless Steel 316L Bicolor Golden PVD
Glass: Sapphire
Water Resistant: 3 ATM
Straps: Stainless Steel 316L Bicolor Golden PVD

H
Movement : Swiss Made Quartz Ronda 505 h3
Diameter: 38 mm
Case Thickness: 4 mm
Case: Stainless Steel 316L Bicolor Golden PVD
Glass: Sapphire
Water Resistant: 3 ATM
Straps: Stainless Steel 316L Bicolor Golden PVD

D
Movement : Swiss Made Quartz Ronda 775
Diameter: 28 mm
Case Thickness: 3 mm
Case: Stainless Steel 316L Bicolor Golden PVD
Glass: Sapphire
Water Resistant: 3 ATM
Straps: Stainless Steel 316L Bicolor Golden PVD

HB
Movement : Swiss Made Quartz Ronda 505 h3
Diameter: 42 mm
Case Thickness: 4 mm
Case: Stainless Steel 316L Golden PVD
Glass: Sapphire
Water Resistant: 3 ATM
Straps: Stainless Steel 316L Golden PVD

H
Movement : Swiss Made Quartz Ronda 505 h3
Diameter: 38 mm
Case Thickness: 4 mm
Case: Stainless Steel 316L Golden PVD
Glass: Sapphire
Water Resistant: 3 ATM
Straps: Stainless Steel 316L Golden PVD

D
Movement : Swiss Made Quartz Ronda 775
Diameter: 28 mm
Case Thickness: 3 mm
Case: Stainless Steel 316L Golden PVD
Glass: Sapphire
Water Resistant: 3 ATM
Straps: Stainless Steel 316L Golden PVD



∅ 42 mm HB611251MBI
 ∅ 38 mm H611251MBI
 ∅ 28 mm D31186MBI

HB611251MBG
 H611251MBG
 D31186MBG

HB611251MBR
 H611251MBR
 D31186MBR

∅ 42 mm
 ∅ 38 mm
 ∅ 28 mm

/
 H611251MPG
 D31186MPG

/
 H611251MPBR
 D31186MPBR



∅ 42 mm
 ∅ 38 mm
 ∅ 28 mm

HB611251MBDI
 H611251MBDI
 D31186MBDI

HB611251MBN
 H611251MBN
 D31186MBN

∅ 42 mm
 ∅ 38 mm
 ∅ 28 mm

/
 H611251MPDI
 D31186MPDI

Rolly I Novelty

Men

Movement : Swiss Made Quartz Ronda 505h3
Diameter: 40 mm
Case Thickness: 11 mm
Case: Stainless Steel 316L Plain or Bicolor Rose tone PVD or Bicolor Golden PVD
Glass: Mineral
Water Resistant: 5 ATM
Straps: Stainless Steel 316L Plain or Bicolor Rose tone PVD or Bicolor Golden PVD
Dials : Analogic

Women

Movement : Swiss Made Quartz Ronda 585h3
Diameter: 32 mm
Case Thickness: 11 mm
Case: Stainless Steel 316L Plain or Bicolor Rose tone PVD or Bicolor Golden PVD
Glass: Mineral
Water Resistant: 5 ATM
Straps: Stainless Steel 316L Plain or Bicolor Rose tone PVD or Bicolor Golden PVD
Dials : Analogic



Men
Women

H450AI
D450AI



H450AN
D450AN



H450ABU
D450ABU



Men
Women

H450RA
D450RA



H450RN
D450RN



H450BI
D450BI



H450BN
D450BN

Men

Movement : Swiss Made Quartz Ronda 515 h3
Diameter: 40 mm
Case Thickness: 5 mm
Case: Stainless Steel 316L Plain or Bicolor Golden PVD or Golden PVD
Glass: Mineral
Water Resistant: 5 ATM
Straps: Stainless Steel 316L Plain or Bicolor Golden PVD or Golden PVD
Dials : Mother of Pearl and Cubic Zirconia

Women

Movement : Swiss Made Quartz Ronda 585 h3
Diameter: 26 mm
Case Thickness: 3 mm
Case: Stainless Steel 316L Plain or Bicolor Golden PVD or Golden PVD
Glass: Mineral
Water Resistant: 5 ATM
Straps: Stainless Steel 316L Plain or Bicolor Golden PVD or Golden PVD
Dials : Mother of Pearl and Cubic Zirconia



Men
Women

H710AI
D710AI



H710BI
D710BI



H710PI
D710PI



Men
Women

H710BDI
D710BDI



H710BN
D710BN



H710PDI
D710PDI

Men

Movement : Swiss Made Quartz Ronda 515 h3
Diameter: 40 mm
Case Thickness: 5 mm
Case: Stainless Steel 316L
Glass: Mineral
Water Resistant: 5 ATM
Straps: Stainless Steel 316L
Dials : Analogic

Women

Movement : Swiss Made Quartz Ronda 585
Diameter: 32 mm
Case Thickness: 3 mm
Case: Stainless Steel 316L
Glass: Mineral
Water Resistant: 5 ATM
Straps: Stainless Steel 316L
Dials : Zircon



H810AI
D810AI

Men
Women



H810AN
D810AN



H810ABU
D810AI

Men
Women



H810AV
D810AV

Men

Movement : Swiss Made Quartz Ronda 515 h3
Diameter: 40 mm
Case Thickness: 5 mm
Case: Stainless Steel 316L Bicolor Golden PVD
Glass: Mineral
Water Resistant: 5 ATM
Straps: Stainless Steel 316L Bicolor Golden PVD
Dials : Analogic

Women

Movement : Swiss Made Quartz Ronda 585 h3
Diameter: 32 mm
Case Thickness: 3 mm
Case: Stainless Steel 316L Bicolor Golden PVD
Glass: Mineral
Water Resistant: 5 ATM
Straps: Stainless Steel 316L Bicolor Golden PVD
Dials : Zircon

Men

Movement : Swiss Made Quartz Ronda 515 h3
Diameter: 40 mm
Case Thickness: 5 mm
Case: Stainless Steel 316L Bicolor Rose tone PVD or Golden PVD
Glass: Mineral
Water Resistant: 5 ATM
Straps: Stainless Steel 316L Bicolor Rose tone PVD or Golden PVD
Dials : Analogic

Women

Movement : Swiss Made Quartz Ronda 585 h3
Diameter: 32 mm
Case Thickness: 3 mm
Case: Stainless Steel 316L Bicolor Rose tone PVD or Golden PVD
Glass: Mineral
Water Resistant: 5 ATM
Straps: Stainless Steel 316L Bicolor Rose tone PVD or Golden PVD
Dials : Zircon



Men
Women

H810BI
D810BI



H810BDI
D810BDI



H810BN
D810BN



Men
Women

H810RA
D810RA



H810RN
D810RA



Men
Women

H810BBU
D810BBU



H810BV
D810BV



Men
Women

H810PI
D810PI



H810PN
D810PN

Mathey-Tissot
SWP Swiss Watch Partners SA
Avenue Krieg, 7
1208 Genève
Switzerland